

Fenner®

Reliable | Trusted | Connected

Fenner® Inverters

The Fenner® range of Inverters offer simple, precise and powerful control, delivering the very best in performance and energy efficiency - time after time.



QD:Neo

Constant Torque 0.75kW - 250kW

Controlling the latest generation of permanent magnet motors and standard induction motors.

- > Just 14 basic parameters
- > Pluggable control terminals
- > Internal RFI filter complies with the latest EMC standards
- > Up to 32kHz Output Switching
Frequency gives ultra quiet motor operation
- > Integral Brake Transistor
- > Modbus and CANopen as standard
- > IP20, IP55 & IP66 enclosures
- > Bluetooth compatible Q-Stick for fast, accurate repeat programming



QD:Flow

Variable Torque 0.75kW - 250kW

Dedicated to optimising efficiency in pumping and HVAC systems.

- > 14 basic parameters
- > Internal RFI filter
- > Belt brake detection
- > Anti-ragging function
- > Fire-mode
- > Spin start
- > Bypass mode
- > BACnet and Modbus RTU as standard
- > Maintenance interval timer
- > Multi-language OLED display
- > Intelligent standby



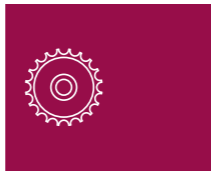
QD:Evo

Easy to use 0.37kW - 11.0kW

Simple commissioning, 12 basic parameter settings, default settings suitable for most applications.

- > Internal RFI filter for full EMC compliance
- > Belt brake detection
- > Modbus RTU allows easy integration with your control and monitoring systems
- > Compact enclosures help minimise your space requirements
- > Brake chopper on sizes 2 & 3, dynamic and compact options with heatsink mounted resistor
- > High overload capacity, 150% overload for 60 seconds and 170% overload for 2 seconds

fptgroup.com



Authorised Distributors:

ERIKS

Belgium

ERIKS Power Transmission
Technology Centre Moorsele / CET MOTOREN
Muizelstraat 8
8560 Gullegem Moorsele
Belgium
Tel: +32 (0) 56 41 47 65
Fax: +32 (0) 56 40 34 60
Email: mgd@eriks.be

Technology Centre Mol / ERIKS + Baudoin
Nijverheidsstraat 13, Industrieterrein II
B-2400 Mol
Belgium
Tel: +32 (0) 14 34 64 84
Fax: +32 (0) 14 31 58 15
Email: powertransmissions@eriks.be

Germany

ERIKS Deutschland GmbH
Business Unit Elektrische Antriebstechnik
Industriestraße 28a
D-21493 Schwarzenbek
Germany
Tel: +49 (0)4151 87 90 6-0
Email: motoren@eriks.de

Netherlands

Aandrijftechniek Groningen
Rouaanstraat 8, 9723 CD Groningen
Postbus 643, 9700 AP Groningen
Tel: +31 50 368 49 49
Fax: +31 50 314 62 57
Email: groningen@eriks.nl

Switzerland

Maagtechnic AG
Sonnentalstrasse 8
8600 Dübendorf
Schweiz
Tel: +41 848 111 333
Fax: +41 848 111 334
Email: info-ch@maagtechnic.com

UK & Ireland

ERIKS UK & Ireland
Amber Way
Halesowen
West Midlands
B62 8WG
Tel: +44 (0)121 508 6000
Email: enquiries@eriks.co.uk

GEARBOXES

Hygienic Geared Drives



Fenner®

Reliable | Trusted | Connected

fpt.group.com

Fenner is a registered trade mark of J. H. Fenner & Co.

Fenner® Hygienic Geared Drives

In environments that demand an especially high level of hygiene or use aggressive cleansing agents that corrode traditional drives, the Fenner® range of Hygienic stainless steel geared drives provides complete inter-changeability with any existing motor population for simple upgrades offering up to **15 times** the service life.

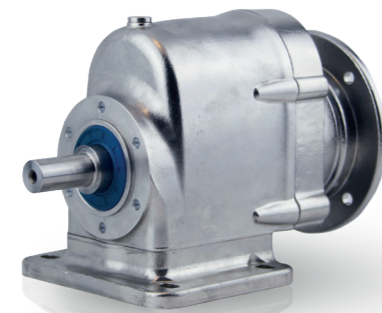
Designed specifically for wash-down duty applications using acid or alkaline solutions required for food, beverage, pharmaceutical or process industries and manufactured in chemical resistant Stainless Steel AISI304/316 with an electrolytic polished surface.

The hygienic characteristics are further complimented by the smooth exteriors free from indentations and catchment areas to prevent the accumulation of dirt, speeding up the cleaning process.

All Fenner Hygienic Geared Drives include;

- > Hygienic design, smooth and free draining surfaces
- > Corrosion and chemical resistant high quality electro polished stainless steel AISI 316
- > No ID plates, specifications are etched on the surface
- > IP66 (optional IP69 (K)) to withstand sanitary washdown

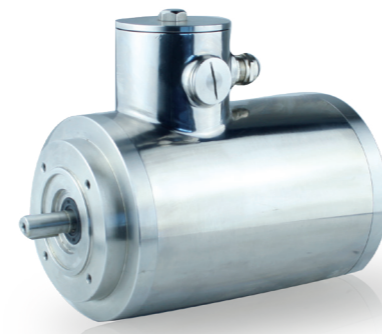
Contamination is the most common cause of food poisoning, 90% of bacteria contamination is caused by bad Hygienic Design.



Geared Unit range

7 types, up to 3,000Nm

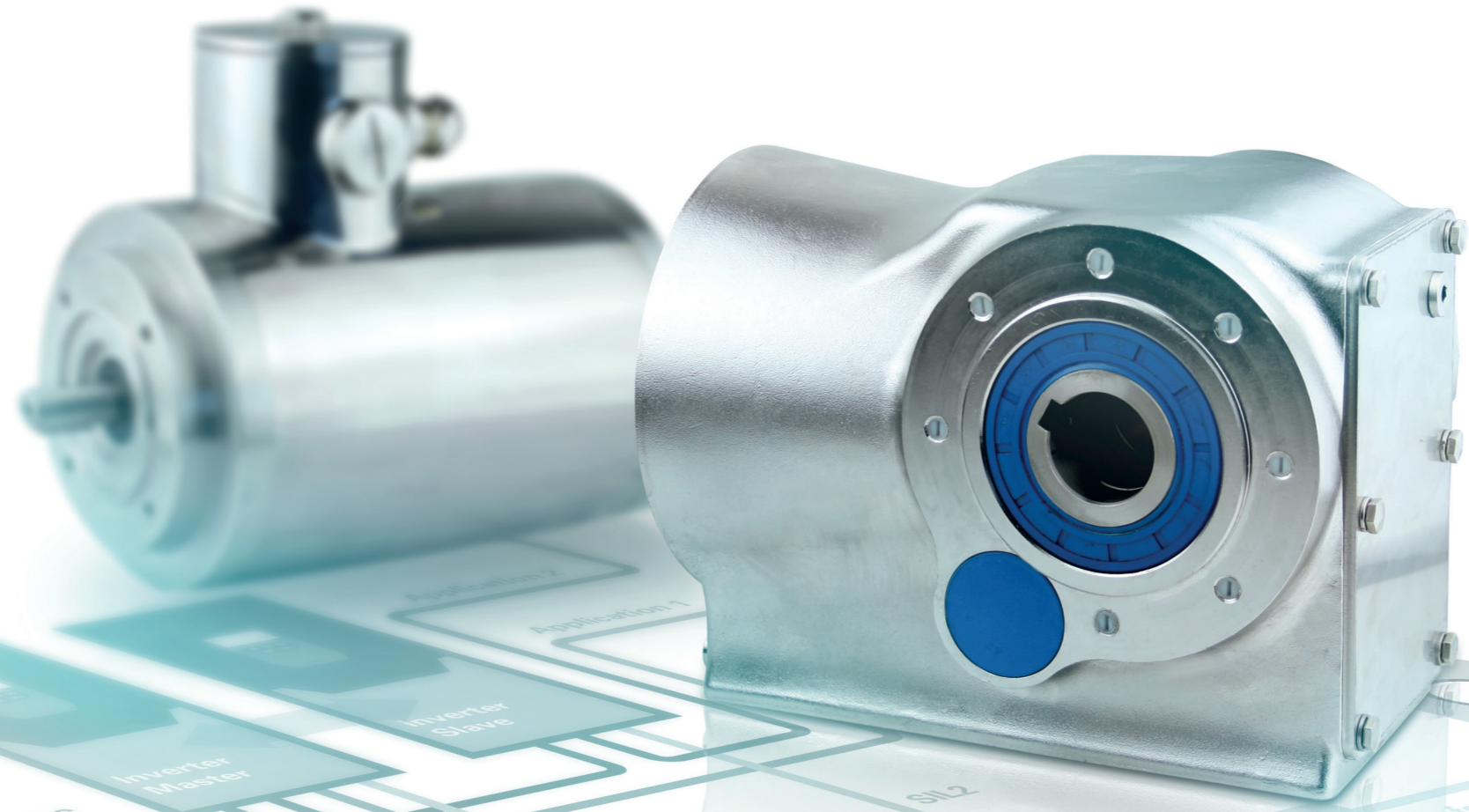
- > Interchangeable with European standard footprints
- > Dry fit IEC mounting
- > Filled with USDA H1 food grade lubrication and Blue FDA approved oil seals
- > Stainless steel AISI 316 breather



Motor range

Power range 0.12kW - 7.5kW

- > IEC interface
- > Unique anti condensation breather
- > Class F isolation
- > Built-in PTC motor thermal protection
- > IE2 or IE3 efficiency
- > Suitable for frequency inverter duty
- > O-ring sealed terminal box

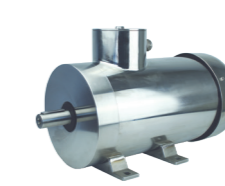


Range

Totally Enclosed Non Ventilated
0.12kW to 0.75kW

Mounting

Totally Enclosed Fan Cooled
0.75kW to 7.5kW



B3



B5



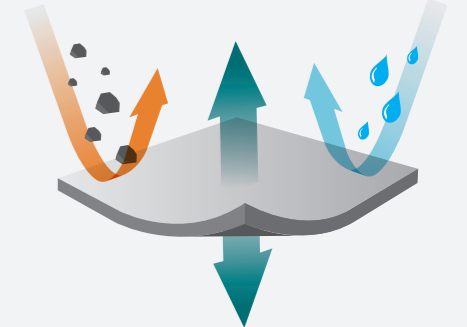
B14a



The unique anti condensation breather balances the pressure difference between the internal air of the sealed motor and the surrounding environment.

The design incorporates a special membrane that allows air to pass but keeps moisture and dirt out to protect the bearings and windings.

All of our stainless steel motors and gearboxes have these fitted as standard if required by the design.



	Motors	Coaxial Drives	Helical Worm	Parallel shaft	Bevel Gear	Worm Gearbox	Hypoid Bevel Gear	Coaxial Drives
	FMH	MH	CH	FH	KH	WH	KHS	MHI
Power (kW)	0.12kW - 7.5kW (*) 11 - 18.5kW	0.12 - 7.5	0.12 - 4,0	0.12 - 11	0.12 - 7,5	0,12 - 1.5	0,12 - 3,0	0,12 - 3,0
Shaft diameters (mm)	B3/B5/B14A/B14B/B35/B34A/B34B	25, 30, 35 (**), 40, 45	20, 30, 35, 40, 45	30, 35, 40, 45, 50, en 60	30, 35, 40, 45, 50 (**), 60	18 - 25	20, 25, 30 and 35	20, 25 and 30
Speed/Max Ratio's	2, 4, 6P / 8P on request	247 : 1	217 : 1	281 : 1	145 : 1	100 : 1	300 : 1	54 : 1
Torque (Nm)		600	520	3000	2700	152	500	152
Options								
Output Flanges	Y	Y	Y	Y	Y	Y	Y	Y
Easy clean open and closed shaft covers			Y	Y	Y	Y	Y	
Easy clean torque arm		Y	Y	Y	Y	Y	Y	
Footplates					Y	Y	Y	Y
Lubrication with Halal, Kosher or Nut free certification		Y	Y	Y	Y	Y	Y	Y
Mirror polishing		Y	Y	Y	Y	Y	Y	Y
Hollow output shaft		Y						
Solid output shafts			Y	Y	Y	Y	Y	