

# Easy installation with Fenner Taper-Grip™

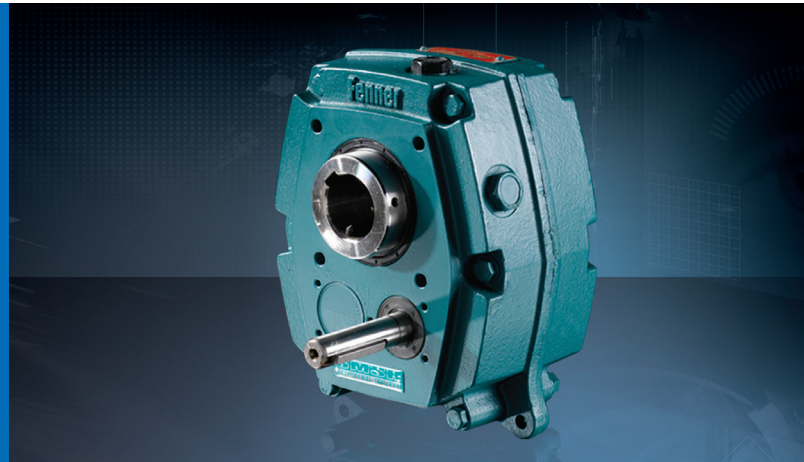
## Situation

The stonewasher drive at a local quarry had broken down. Following an inspection it was noted that the current shaft mounted gearbox was underated for the application.

## Solution

After calculating the exact power requirements for the application, a **Fenner SMSR gearbox** was selected. However, the larger gearbox has a 125mm hub and would not fit the existing 120mm shaft, so the ERIKS Drives team set to work converting a standard bore gearbox to the innovative Fenner **Taper-Grip™ bush locking system**, which when supplied with a 120mm Taper-Grip™ bush could be easily fitted without any additional modification required to the machine.

The unique Taper-Grip bush locking system allows Fenner SMSR's to be secured to the driven shaft thus overcoming the difficulties that can be experienced with other methods of mounting - particularly in corrosive environments.



Industry Sector:

**BUILDING MINING  
& QUARRYING**