

# Flexion<sup>TM</sup>

## ADAPTORS

**FLEXION<sup>TM</sup> offer a wide variety of Nickel Plated Brass adaptors to complement the range of push in fittings.**

With threads from 1/8" to 1" in over 30 different forms, the optimum connection solution can be found in this range.

Suitable for all fluids compatible with the materials, these fittings can be used in harsh environments.



### ADAPTORS RANGE

#### SPECIFICATIONS

**Max Pressure** 60 Bar



#### Application:

Pneumatic and hydraulic systems.  
Standard Fittings: elbows, tees, y pieces, cross, hose connections.  
1/8" - 1" nipples, reducers, sleeves, caps, crossover fittings

#### Threads:

Tapered Gas - ISO7- Din 2999 - BS21  
Cylindrical (Parallel) Gas - ISO 228

#### Materials:

Brass UNI EN 12164 CW 614N  
Brass UNI EN 12165 CW 617N  
Surface Treatment: Nickel-plating

### ALUMINIUM DISTRIBUTORS



#### Threads:

Tapered Gas - ISO7- Din 2999 - BS21  
Cylindrical (Parallel) Gas - ISO 228  
Metric - ISO R/262

#### Materials:

Anodised Aluminium Alloy 2011 T3-Uni En 573-3

## ADAPTORS

### ELBOW ADAPTOR - MALE / MALE

Code	Thread Size
ADPT-B-L-1/8MM-FX	1/8"
ADPT-B-L-1/4MM-FX	1/4"
ADPT-B-L-1/4M1/8M-FX	1/4" - 1/8"
ADPT-B-L-3/8MM-FX	3/8"

Code	Thread Size
ADPT-B-L-1/2MM-FX	1/2"
ADPT-B-L-3/4MM-FX	3/4"
ADPT-B-L-1MM-FX	1"



### ELBOW ADAPTOR - MALE / FEMALE

Code	Thread Size
ADPT-B-L-1/8MF-FX	1/8"
ADPT-B-L-1/4MF-FX	1/4"
ADPT-B-L-1/4M1/8F-FX	1/4" - 1/8"
ADPT-B-L-3/8MF-FX	3/8"

Code	Thread Size
ADPT-B-L-1/2MF-FX	1/2"
ADPT-B-L-3/4MF-FX	3/4"
ADPT-B-L-1MF-FX	1"



### ELBOW ADAPTOR - FEMALE / FEMALE

Code	Thread Size
ADPT-B-L-1/8FF-FX	1/8"
ADPT-B-L-1/4FF-FX	1/4"
ADPT-B-L-3/8FF-FX	3/8"

Code	Thread Size
ADPT-B-L-1/2FF-FX	1/2"
ADPT-B-L-3/4FF-FX	3/4"



### TEE ADAPTOR - MALE / MALE / MALE

Code	Thread Size
ADPT-B-T-1/8MMM-FX	1/8"
ADPT-B-T-1/4MMM-FX	1/4"
ADPT-B-T-3/8MMM-FX	3/8"

Code	Thread Size
ADPT-B-T-1/2MMM-FX	1/2"
ADPT-B-T-3/4MMM-FX	3/4"
ADPT-B-T-1MMM-FX	1"



### TEE ADAPTOR - MALE / FEMALE / MALE

Code	Thread Size
ADPT-B-T-1/8MFM-FX	1/8"
ADPT-B-T-1/4MFM-FX	1/4"
ADPT-B-T-3/8MFM-FX	3/8"

Code	Thread Size
ADPT-B-T-1/2MFM-FX	1/2"
ADPT-B-T-3/4MFM-FX	3/4"
ADPT-B-T-1MFM-FX	1"



**ADAPTORS**

TEE ADAPTOR - MALE / FEMALE / FEMALE

Code	Thread Size
ADPT-B-T-1/8MFF-FX	1/8"
ADPT-B-T-1/4MFF-FX	1/4"
ADPT-B-T-3/8MFF-FX	3/8"

Code	Thread Size
ADPT-B-T-1/2MFF-FX	1/2"
ADPT-B-T-3/4MFF-FX	3/4"
ADPT-B-T-1MFF-FX	1"



TEE ADAPTOR - FEMALE / FEMALE / FEMALE

Code	Thread Size
ADPT-B-T-1/8FFF-FX	1/8"
ADPT-B-T-1/4FFF-FX	1/4"
ADPT-B-T-3/8FFF-FX	3/8"

Code	Thread Size
ADPT-B-T-1/2FFF-FX	1/2"
ADPT-B-T-3/4FFF-FX	3/4"
ADPT-B-T-1FFF-FX	1"



TEE ADAPTOR - FEMALE / MALE / FEMALE

Code	Thread Size
ADPT-B-T-1/8FMF-FX	1/8"
ADPT-B-T-1/4FMF-FX	1/4"
ADPT-B-T-3/8FMF-FX	3/8"

Code	Thread Size
ADPT-B-T-1/2FMF-FX	1/2"
ADPT-B-T-3/4FMF-FX	3/4"
ADPT-B-T-1FMF-FX	1"



TEE ADAPTOR - MALE / MALE / FEMALE

Code	Thread Size
ADPT-B-T-1/8MMF-FX	1/8"
ADPT-B-T-1/4MMF-FX	1/4"
ADPT-B-T-3/8MMF-FX	3/8"

Code	Thread Size
ADPT-B-T-1/2MMF-FX	1/2"
ADPT-B-T-3/4MMF-FX	3/4"
ADPT-B-T-1MMF-FX	1"



Y ADAPTOR - FEMALE / MALE / FEMALE

Code	Thread Size
ADPT-B-Y-1/8FMF-FX	1/8"
ADPT-B-Y-1/4FMF-FX	1/4"
ADPT-B-Y-3/8FMF-FX	3/8"
ADPT-B-Y-1/2FMF-FX	1/2"



Y ADAPTOR - FEMALE / FEMALE / FEMALE

Code	Thread Size
ADPT-B-Y-1/8FFF-FX	1/8"
ADPT-B-Y-1/4FFF-FX	1/4"
ADPT-B-Y-3/8FFF-FX	3/8"
ADPT-B-Y-1/2FFF-FX	1/2"



## ADAPTORS

### CROSS ADAPTOR - MALE / FEMALE / FEMALE / FEMALE

Code	Thread Size
ADPT-B-X-1/8MFFF-FX	1/8"
ADPT-B-X-1/4MFFF-FX	1/4"
ADPT-B-X-3/8MFFF-FX	3/8"
ADPT-B-X-1/2MFFF-FX	1/2"



### CROSS ADAPTOR - FEMALE / FEMALE / FEMALE / FEMALE

Code	Thread Size
ADPT-B-X-1/8FFFF-FX	1/8"
ADPT-B-X-1/4FFFF-FX	1/4"
ADPT-B-X-3/8FFFF-FX	3/8"
ADPT-B-X-1/2FFFF-FX	1/2"



### LOCKING NUT

Code	Thread Size
LCKNUT-1/8-FX	1/8"
LCKNUT-1/4-FX	1/4"
LCKNUT-3/8-FX	3/8"

Code	Thread Size
LCKNUT-1/2-FX	1/2"
LCKNUT-3/4-FX	3/4"
LCKNUT-1-FX	1"



### ALUMINIUM MANIFOLD

Code	Thread Size
MFLD-AL-1/8AN-FX	1/8"
MFLD-AL-1/4AN-FX	1/4"
MFLD-AL-3/8AN-FX	3/8"
MFLD-AL-1/2AN-FX	1/2"



### ALUMINIUM MANIFOLD - SINGLE SIDED

Code	Thread Size	Ports
MFLD-AL-1/4-1/8-2-FX	1/4" - 1/8"	2
MFLD-AL-1/4-1/8-4-FX	1/4" - 1/8"	4



## ADAPTORS

### ALUMINIUM MANIFOLD - DOUBLE SIDED

Code	Thread Size	Ports
MFLD-AL-1/4-1/8-2+2-FX	1/4" - 1/8"	2+2
MFLD-AL-1/4-1/8-4+4-FX	1/4" - 1/8"	4+4



### NIPPLE TAPER

Code	Thread Size
NIP-B-T-1/8-FX	1/8"
NIP-B-T-1/4-FX	1/4"
NIP-B-T-3/8-FX	3/8"

Code	Thread Size
NIP-B-T-1/2-FX	1/2"
NIP-B-T-3/4-FX	3/4"
NIP-B-T-1-FX	1"



### NIPPLE PARALLEL

Code	Thread Size
NIP-B-RED-T-1/8-1/4-FX	1/8" - 1/4"
NIP-B-RED-T-1/8-3/8-FX	1/8" - 3/8"
NIP-B-RED-T-1/4-3/8-FX	1/4" - 3/8"
NIP-B-RED-T-1/4-1/2-FX	1/4" - 1/2"

Code	Thread Size
NIP-B-RED-T-3/8-1/2-FX	3/8" - 1/2"
NIP-B-RED-T-1/2-3/4-FX	1/2" - 3/4"
NIP-B-RED-T-3/4-1-FX	3/4" - 1"



### NIPPLE REDUCER TAPER

Code	Thread Size
NIP-B-RED-T-1/8-1/4-FX	1/8" - 1/4"
NIP-B-RED-T-1/8-3/8-FX	1/8" - 3/8"
NIP-B-RED-T-1/4-3/8-FX	1/4" - 3/8"
NIP-B-RED-T-1/4-1/2-FX	1/4" - 1/2"

Code	Thread Size
NIP-B-RED-T-3/8-1/2-FX	3/8" - 1/2"
NIP-B-RED-T-1/2-3/4-FX	1/2" - 3/4"
NIP-B-RED-T-3/4-1-FX	3/4" - 1"



### NIPPLE REDUCER PARALLEL

Code	Thread Size
NIP-B-RED-P-1/8-1/4-FX	1/8" - 1/4"
NIP-B-RED-P-1/8-3/8-FX	1/8" - 3/8"
NIP-B-RED-P-1/4-3/8-FX	1/4" - 3/8"
NIP-B-RED-P-1/4-1/2-FX	1/4" - 1/2"

Code	Thread Size
NIP-B-RED-P-3/8-1/2-FX	3/8" - 1/2"
NIP-B-RED-P-1/2-3/4-FX	1/2" - 3/4"
NIP-B-RED-P-3/4-1-FX	3/4" - 1"



## ADAPTORS

### REDUCER TAPER - MALE / FEMALE

Code	Thread Size
RED-B-T-1/8M1/4F-FX	1/8M - 1/4F
RED-B-T-1/8M3/8F-FX	1/8M - 3/8F
RED-B-T-1/4M1/4F-FX	1/4M - 1/4F
RED-B-T-1/4M3/8F-FX	1/4M - 3/8F
RED-B-T-1/4M1/2F-FX	1/4M - 1/2F

Code	Thread Size
RED-B-T-3/8M3/8F-FX	3/8M - 3/8F
RED-B-T-3/8M1/2F-FX	3/8M - 1/2F
RED-B-T-1/2M1/2F-FX	1/2M - 1/2F
RED-B-T-1/2M3/4F-FX	1/2M - 3/4F
RED-B-T-1/2M1F-FX	1/2M - 1F



### REDUCER PARALLEL - MALE / FEMALE

Code	Thread Size
RED-B-P-M5M1/8F-FX	M5M - 1/8F
RED-B-P-1/8M1/8F-FX	1/8M - 1/8F
RED-B-P-1/8M1/4F-FX	1/8M - 1/4F
RED-B-P-1/8M3/8F-FX	1/8M - 3/8F
RED-B-P-1/4M1/4F-FX	1/4M - 1/4F
RED-B-P-1/4M3/8F-FX	1/4M - 3/8F

Code	Thread Size
RED-B-P-1/4M1/2F-FX	1/4M - 1/2F
RED-B-P-3/8M3/8F-FX	3/8M - 3/8F
RED-B-P-3/8M1/2F-FX	3/8M - 1/2F
RED-B-P-1/2M1/2F-FX	1/2M - 1/2F
RED-B-P-1/2M1F-FX	1/2M - 1F



### BULKHEAD - FEMALE / FEMALE

Code	Thread Size
BULK-B-FF1/8-M16X1.5-FX	1/8" - M16 X 1.5
BULK-B-FF1/4-M20X1.5-FX	1/4" - M20 X 1.5
BULK-B-FF3/8-M26X1.5-FX	3/8" - M26 X 1.5
BULK-B-FF1/2-M28X1.5-FX	1/2" - M28 X 1.5



### REDUCER TAPER - MALE / FEMALE

Code	Thread Size
RED-B-T-1/4M1/8F-FX	1/4M - 1/8F
RED-B-T-3/8M1/8F-FX	3/8M - 1/8F
RED-B-T-3/8M1/4F-FX	3/8M - 1/4F
RED-B-T-1/2M1/8F-FX	1/2M - 1/8F
RED-B-T-1/2M1/4F-FX	1/2M - 1/4F

Code	Thread Size
RED-B-T-1/2M3/8F-FX	1/2M - 3/8F
RED-B-T-3/4M3/8F-FX	3/4M - 3/8F
RED-B-T-3/4M1/2F-FX	3/4M - 1/2F
RED-B-T-1M1/2F-FX	1M - 1/2F



### REDUCER PARALLEL - MALE / FEMALE

Code	Thread Size
RED-B-P-1/4M1/8F-FX	1/4M - 1/8F
RED-B-P-3/8M1/8F-FX	3/8M - 1/8F
RED-B-P-3/8M1/4F-FX	3/8M - 1/4F
RED-B-P-1/2M1/8F-FX	1/2M - 1/8F
RED-B-P-1/2M1/4F-FX	1/2M - 1/4F

Code	Thread Size
RED-B-P-1/2M3/8F-FX	1/2M - 3/8F
RED-B-P-3/4M3/8F-FX	3/4M - 3/8F
RED-B-P-3/4M1/2F-FX	3/4M - 1/2F
RED-B-P-1M1/2F-FX	1M - 1/2F



## ADAPTORS SLEEVE

Code	Thread Size
SLV-B-M5-FX	M5
SLV-B-1/8-FX	1/8"
SLV-B-1/4-FX	1/4"
SLV-B-3/8-FX	3/8"

Code	Thread Size
SLV-B-1/2-FX	1/2"
SLV-B-3/4-FX	3/4"
SLV-B-1-FX	1"



## SLEEVE REDUCER

Code	Thread Size
SLV-RED-B-M5-1/8-FX	M5-1/8"
SLV-RED-B-1/8-1/4-FX	1/8" - 1/4"
SLV-RED-B-1/8-3/8-FX	1/8" - 3/8"
SLV-RED-B-1/8-1/2-FX	1/8" - 1/2"

Code	Thread Size
SLV-RED-B-1/4-3/8-FX	1/4" - 3/8"
SLV-RED-B-1/4-1/2-FX	1/4" - 1/2"
SLV-RED-B-3/8-1/2-FX	3/8" - 1/2"
SLV-RED-B-1/2-3/4-FX	1/2" - 3/4"



## PLUG PARALLEL - MALE

Code	Thread Size
PLG-B-P-M1/8-FX	1/8"
PLG-B-P-M1/4-FX	1/4"
PLG-B-P-M3/8-FX	3/8"

Code	Thread Size
PLG-B-P-M1/2-FX	1/2"
PLG-B-P-M3/4-FX	3/4"
PLG-B-P-M1-FX	1"



## PLUG WITH HEX - C/W WITH 'O' RING

Code	Thread Size
PLG-B-HEX-OR-1/8-FX	1/8"
PLG-B-HEX-OR-1/4-FX	1/4"
PLG-B-HEX-OR-3/8-FX	3/8"
PLG-B-HEX-OR-1/2-FX	1/2"



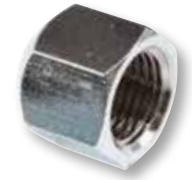
## PLUG TAPER A - MALE

Code	Thread Size
PLG-B-T-M1/8-FX	1/8"
PLG-B-T-M1/4-FX	1/4"
PLG-B-T-M3/8-FX	3/8"
PLG-B-T-M1/2-FX	1/2"



**ADAPTORS**  
PLUG - FEMALE

Code	Thread Size
PLG-B-F1/8-FX	1/8"
PLG-B-F1/4-FX	1/4"
PLG-B-F3/8-FX	3/8"
PLG-B-F1/2-FX	1/2"



HOSETAIL PARALLEL - MALE C/W 'O' RING

Code	Thread Size
HTAIL-B-P-OR4.5-M5-FX	4.5 - M5
HTAIL-B-P-OR6-1/8-FX	6 - 1/8"
HTAIL-B-P-OR6-1/4-FX	6 - 1/4"
HTAIL-B-P-OR7-1/8-FX	7 - 1/8"
HTAIL-B-P-OR7-1/4-FX	7 - 1/4"
HTAIL-B-P-OR8-1/8-FX	8 - 1/8"
HTAIL-B-P-OR8-1/4-FX	8 - 1/4"
HTAIL-B-P-OR9-1/8-FX	9 - 1/8"

Code	Thread Size
HTAIL-B-P-OR9-1/4-FX	9 - 1/4"
HTAIL-B-P-OR9-3/8-FX	9 - 3/8"
HTAIL-B-P-OR12-1/4-FX	12 - 1/4"
HTAIL-B-P-OR12-3/8-FX	12 - 3/8"
HTAIL-B-P-OR12-1/2-FX	12 - 1/2"
HTAIL-B-P-OR17-3/8-FX	17 - 3/8"
HTAIL-B-P-OR17-1/2-FX	17 - 1/2"

