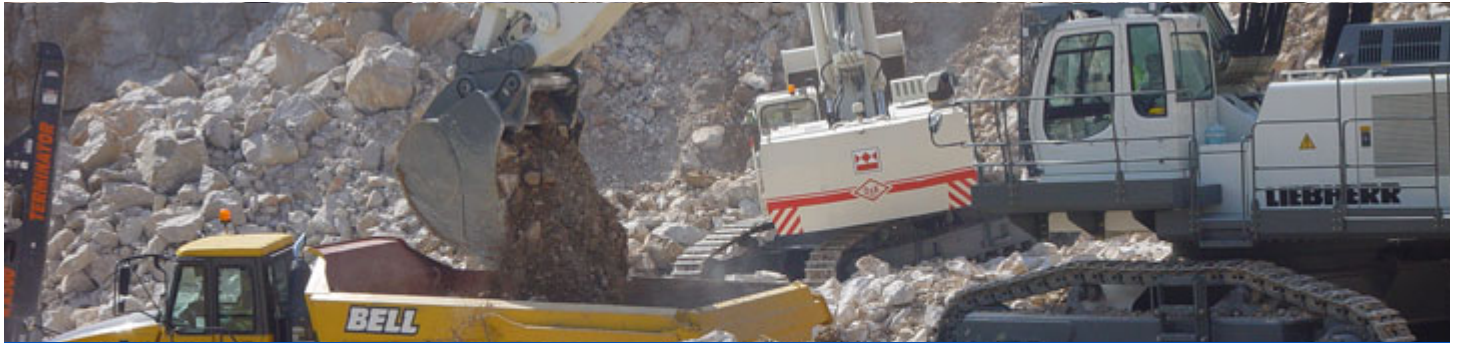




Summary

Industry:	Quarrying & Mining
Application:	conveyor drive
Actual Saving:	£n/a
Payback Period:	n/a



Fenner Gearbox solves problems

Quarry customer

ISSUE

A large quarry were having problems with a motor gearbox driving a conveyor belt carrying stones via a wedge belt and pulley system. The customer contacted their Key Account Sales Representative, Robert Barnfield, to offer assistance. Rather than ERIKS replacing the motor gearbox like for like, it was suggested that an alternative motor gearbox arrangement was investigated first.

SOLUTION

The Horizontal conveyor details were taken, belt width, travelling distance with approx tonnage, the actual speed was ascertained using the existing gearbox details along with the belt and pulley ratio. Based on this information ERIKS offered a Fenner K series Bevel Helical Gearbox to fit directly onto the conveyor drum, doing away with the belt and pulley system, using a 11KW motor with final output speed of 15RPM and a torque rating of 6937Nm the service factor based on 3-10 hours per day with moderate shock load would be 1.27SF - 93-94% efficiency, which is much greater than the current set up.

OTHER BENEFITS

- Off the shelf solution
- ERIKS technical know-how provided the customer with a better solution

FURTHER COMMENTS...

The quarry also gave the enquiry to a competitor who couldn't give the customer the level of service or technical know-how offered by ERIKS and they only quoted like for like. As the Fenner unit was in stock in component form the customer promptly placed the order after speaking to an ERIKS Application Engineers, who gave the customer that extra confidence he was looking for.

MORE INFORMATION

ERIKS Industrial Services

Amber Way, Halesowen,
West Midlands B62 8WG

Tel: 0845 006 6000

Web: www.eriks.co.uk