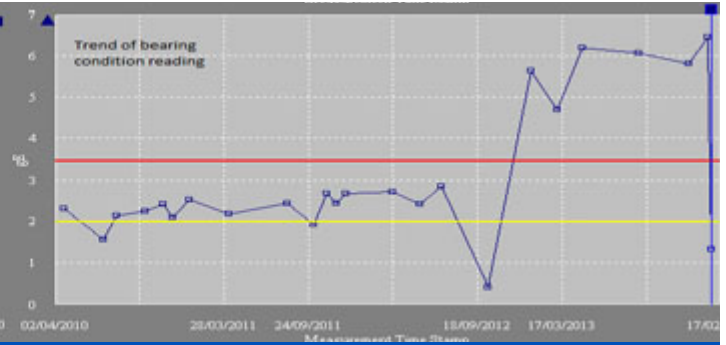
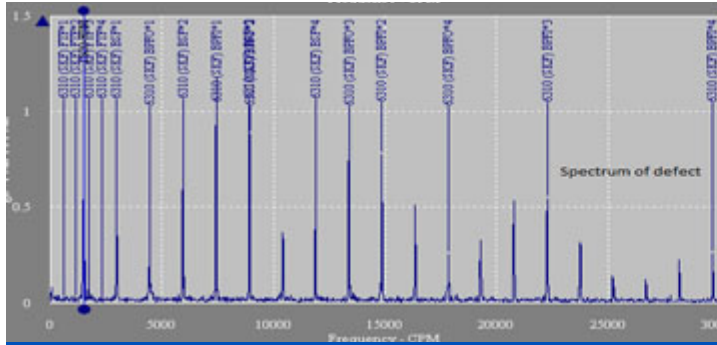




Summary



Industry:	Food - Bakery & Cereals
Application:	Condition Monitoring
Actual Saving:	£40, 000
Payback Period:	Immediate



Condition Monitoring detects bearing failure early

A Vibration Analysis survey detected metal to metal contact within the bearing

ISSUE

A leading food manufacturer, had contracted ERIKS to carry out condition monitoring regularly on site.

While performing a Vibration Analysis survey, a raised bearing condition reading was found on a motor on the F Mill of the factory. ERIKS informed the customer that this bearing would need replacing.

SOLUTION

The customer did not hold a spare of the motor on site, so ERIKS EMS was requested to attend the site and overhaul the motor, this was completed just before failure occurred.

While the machine was turned off ERIKS took the opportunity to perform a static inspection on the Mill bearings as they were also showing signs of fatigue. The survey showed that they also needed replacing and this has now been planned by the customer, helping to significantly reduce downtime at the customer site.

OTHER BENEFITS

- Reduced downtime
- Repaired on site
- Other static inspections completed

FURTHER COMMENTS...

If this unit had failed then the whole mill would have stopped, resulting in a major loss of production and potential lost customers. We cannot value enough the effectiveness of the condition monitoring and the timely, quality repair undertaken.

Site Engineer

MORE INFORMATION

ERIKS Industrial Services

Amber Way, Halesowen,
West Midlands B62 8WG

Tel: 0845 006 6000

Web: www.eriks.co.uk